



Graver Technologies

Filtration | Separation | Purification

Crystal MBF Series Filter Cartridges

Melt Blown Filters

An economical, disposable, filter element that can be used in a wide range of applications. The Crystal MBF depth filter is constructed of 100% polypropylene media for chemical compatibility with a variety of process fluids. The unique Crystal Core prevents collapse even at elevated temperatures.

Features–Benefits

- Available in nominal ratings from 1 to 75 microns
- Formed Crystal Core for excellent collapse strength
- Graded pore construction for long on-stream life
- Melt blown media resists dirt unloading as differential pressure increases
- Non-shedding
- High dirt holding capacity
- Economical depth filtration
- Thermal bonded endcaps optional
- Free of binders, adhesives and surfactants
- Highly consistent performance

Product Specifications

Media:	Polypropylene
End caps/Center core:	Polypropylene
Gaskets/O-Rings:	Silicone, EPDM, Buna N, Santoprene, Viton, Teflon encapsulated Viton (O-Rings only)
Micron ratings:	1, 3, 5, 10, 20, 30, 50, 75 μ m

Dimensions

Nominal lengths:	9.75", 10", 20", 30", 40", 50" (24.8, 25.4, 50.8, 76.2, 101.6, 127 cm) Other lengths available
Outside diameter:	2.5" (6.35 cm), 2.63" (6.7 cm) Endcapped
Inside diameter:	1.1" (2.79 cm)

Operating Parameters

Maximum differential pressure:	65 psid @ 68°F (4.5 bar @ 20°C) 50 psid @ 100°F (3.4 bar @ 38°C) 25 psid @ 170°F (1.7 bar @ 77°C)
--------------------------------	---

Recommended changeout differential pressure:	35psid (2.4 bar)
--	------------------

*NSF61 applies to NN, P6 and PX styles only



Certifications

USP Class VI - Meets USP Class VI Biological Test for Plastics.

FDA Listed Materials - All Materials comply with FDA Title 21 of the Code of Federal Regulations Sections 174.5, and 177.1520, as applicable for food and beverage contact.

NSF 61 - Certified to NSF/ANSI STD 61 for materials requirements only - Component.

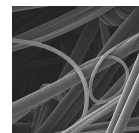


Certified to NSF/ANSI Standard 61 for materials requirements only.

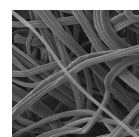
COMPONENT

Typical Applications

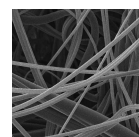
- RO Prefilters
- Wastewater
- Food & beverage
- Chemicals
- Blowdown post filter
- Rad waste
- Aqueous solutions
- Inks



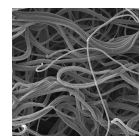
Outer prefilter zone



Inner prefilter zone



Final prefilter zone



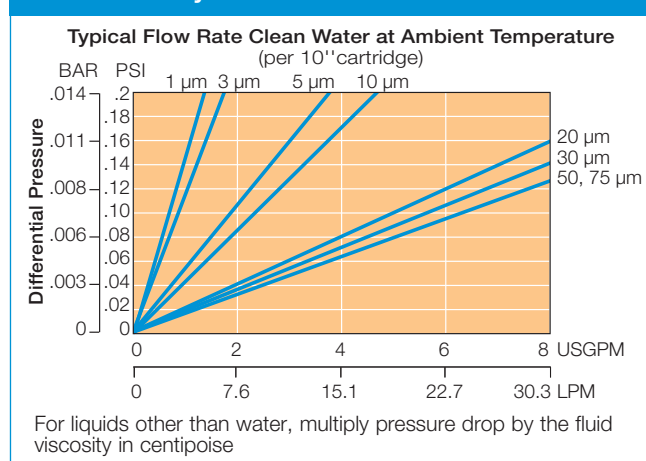
Final filtration zone

Crystal MBF Nomenclature Information

CMBF	10	-20	N	N	-BB
Filter Type Crystal MBF Series Filters		Nominal Length (inches) -4 -5 -9.75 -10 -19.5 -20 -29.25 -30 -39 -40 -50	End Configuration P Double Open End P2 226/Flat Single Open End P3 222/Flat Single Open End P6 Self-Seal Spring on One End P7 226/Fin Single Open End P8 222/Fin Single Open End PX Extended Core N None (Cut Ends) DBG Direct Bond Santoprene Gaskets		Blank Individually bagged -BB Single bulk bag
Retention Rating (microns) 1 20 3 30 5 50 10 75				Gasket or O-Ring S Silicone B Buna-N E EPDM V Viton T Teflon endcap. Viton (O-Rings only) N None	

Example: CMBF 10-20NN-BB

Crystal MBF FLOW RATE



For more information

Graver Technologies Customer Service: **1-888-353-0303**

Technical Support: **1-888-353-0303**

E-mail: **info@gravertech.com**

Graver Technologies Europe (UK): **+44-1424-777791**

Graver Technologies China: **+86-21-5238-6576**

DISTRIBUTED BY:

All information and recommendations appearing in this bulletin concerning the use of products described herein are based on tests believed to be reliable. However, it is the user's responsibility to determine the suitability for his own use of such products. Since the actual use by others is beyond our control, no guarantee, expressed or implied, is made by Graver Technologies as to the effects of such use or the results to be obtained. Graver Technologies assumes no liability arising out of the use by others of such products. Nor is the information herein to be construed as absolutely complete, since additional information may be necessary or desirable when particular or exceptional conditions or circumstances exist or because of applicable laws or government regulations.



Graver Technologies

200 Lake Drive
Glasgow,
DE 19702 U.S.A.

302-731-1700
800-249-1990
Fax: 302-369-0938

e-mail: info@gravertech.com
web site: www.gravertech.com

